

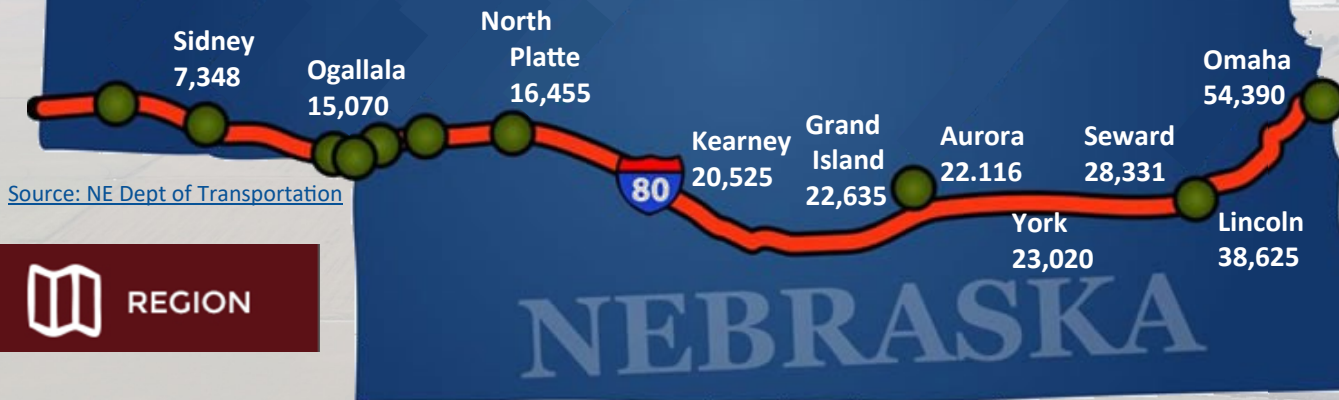
BUSINESS UPDATE

SEPTEMBER 2021

2020

Average Daily Traffic Counts On I-80

This map shows that traffic counts on I-80 generally decrease across the state from east to west. When comparing traffic counts from 2012-2020, traffic increased or stayed stable each year with the exception of 2020, when all stations experienced a decrease in traffic due to the pandemic. Click the source links for more information.



Annual Average Daily Traffic By Station for the Years 2012 to 2020

Source: [NDOT Annual Traffic County Data](#)

	2012	2013	2014	2015	2016	2017	2018	2019	2020
I-80 at 36th Street in Omaha	169,359	172,229	171,875	173,168	141,272	179,553	176,746	178,417	147,330
I-80 West of Gretna Interchange	41,242	42,237	43,642	46,845	49,292	51,300	51,221	52,251	43,074
East of Milford Interchange	28,468	29,290	29,854	31,178	32,238	32,721	33,123	32,321	29,092
I-80 West of Seward Interchange	24,438	25,046	25,778	27,087	28,204	28,716	28,427	28,331	25,561
I-80 West of Aurora Interchange	20,987	21,155	21,640	22,941	23,890	24,201	23,993	23,942	22,116
I-80 East of E. Kearney Interchange	17,716	18,099	18,696	20,673	21,423	22,521	22,478	22,790	21,811
I-80 East of North Platte									16,603

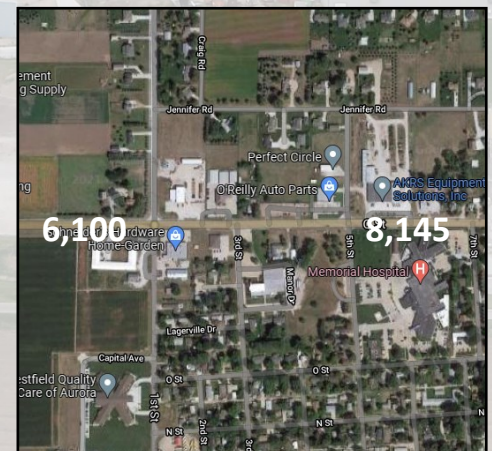
Average Daily Traffic Counts at Aurora Interstate Exit



Average Daily Traffic Counts at Hwy 34 & Hwy 14 Intersection



Average Daily Traffic Counts at Hwy 34 from 1st - 7th Street



AURORA, NE | OPPORTUNITY GROWS HERE

Aurora Development Corporation | 1604 L Street | P.O. Box 226 | Aurora, NE 68818

402-694-4088 | kelsey@growaurora.com | www.GrowAurora.com